

MAY 2024

# JCT NEWSLETTER

Communication is everyone's business.



## All About Echolalia

Have you heard about Gestalt Language Processing? We're all on a learning journey about this type of language processing, including us at the JCT. That's why this May issue of our newsletter is dedicated to learning more about Echolalia and Gestalt Language Processing.

We have introduced **two new workshops all about Gestalt Language Processing** run by our JCT Speech and Language Therapist Aimee:

- Understanding Echolalia for PVI / EYFS and Primary Professionals
- Understanding Echolalia for Parents and Caregivers

You can sign up for the workshops here and we would love to see you there!

<https://lbhfinpirehub.com/events/>

The JCT Team

## What is Gestalt Language Processing?

It's a way of learning and processing language.

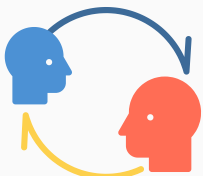
Children who use gestalt language development process language in whole chunks instead of processing single words... at first. Both analytic language development [that's the way of learning language we tend to see as 'typical'] and gestalt language development are normal and natural!

## Get in touch

E-mail: [inspirehf@lbhf.gov.uk](mailto:inspirehf@lbhf.gov.uk)

Visit our website:

[lbhfinpirehub.com](http://lbhfinpirehub.com)



## May Workshops:

**Communication For All [Primary]**  
Tuesday 7th May - 3:30 - 4:15

**Enabling Learning Environments [Primary]**  
Thursday 9th May - 8:30 - 9:15

**\*NEW Promoting Oracy for Better Reading and Writing (Reception & Year 1)\***  
Thursday 9th May - 3:30 - 4:15  
Thursday 16th May - 8:30 - 9:15

**\*NEW\* Understanding Echolalia**  
Wednesday 8th May - 3:30 - 5:00  
Monday 20th May - 8:30 - 10:00  
Thursday 13th June - 3:30 - 5:00  
Monday 17th June - 8:30 - 10:00

**\*NEW\* Understanding Echolalia for Parents and Caregivers**  
THURSDAY 2ND MAY 10-10.45  
MONDAY 13TH MAY 10-10.45  
WEDNESDAY 5TH JUNE 2-2.45  
THURSDAY 13TH JUNE 12.15-1  
FRIDAY 14TH JUNE 10-10.45  
FRIDAY 5TH JULY 1-1.45  
FRIDAY 12TH JULY 12-12.45  
WEDNESDAY 17TH JULY 10-10.45

**Storytelling and Narrative Teaching Strategies [Primary]**  
Wednesday 1st May - 8:30 - 9:15

**Running a Targeted Group: Storytelling and Narrative (Y5+)**  
Thursday 2nd May - 4:00 - 4:30

**Inclusive EAL\***  
Tuesday 7th May - 12.30-1.30  
Tuesday 7th May - 3.30- 4.30pm  
**\*THIS TRAINING ONLY - Book by emailing inspire@lbhf.gov.uk\***

**In-class Strategies for Supporting Learners with SLCN [Secondary]**  
Wednesday 15th May - 8:30 - 9:15am





## Workshop of the month

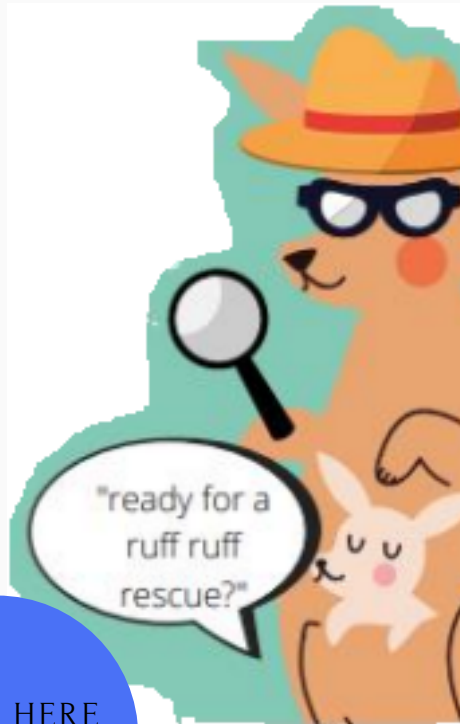
### Understanding Echolalia



Learn two different ways which children in your class may be learning language, learn what echolalia is and identify strategies to support a child who is an intonational / Gestalt language learner.

**We have workshops available for professionals and parents and caregivers so please do signpost to relevant families!**

[CLICK HERE TO BOOK](#)



## A BRIEF ECHOLALIA GLOSSARY

WE KNOW THERE ARE LOTS OF DIFFERENT WORDS USED TO DESCRIBE GESTALT LANGUAGE PROCESSING, HERE'S A QUICK GUIDE TO HELP...

**GESTALT LANGUAGE PROCESSING**  
AKA. *GESTALT LANGUAGE LEARNING, INTONATIONAL LANGUAGE LEARNING.*  
A PROCESS OF LEARNING LANGUAGE IN WHOLE CHUNKS INSTEAD OF PROCESSING SINGLE WORDS... AT FIRST.

**ANALYTICAL LANGUAGE PROCESSING**  
AKA. *WORD BABIES*  
THIS IS THE 'OTHER' TYPE OF LANGUAGE PROCESSING [THERE ARE TWO] AND THE TYPE YOU HAVE PROBABLY LEARNT ABOUT IN THE PAST. ANALYTIC LANGUAGE LEARNERS LEARN ONE WORD AT A TIME AND THEN COMBINE WORDS TO BUILD LONGER 'STRINGS' OF LANGUAGE.

**ECHOLALIA**  
ECHOLALIA IS WHEN A CHILD REPEATS OR 'ECHOES' LANGUAGE [WHICH COULD BE JARGON, A PHRASE, A SONG OR EVEN A WHOLE STORY] ECHOLALIA CAN BE IMMEDIATE [STRAIGHT AFTER THE CHILD HEARS IT] OR DELAYED [REPEATING A 'CHUNK' OF LANGUAGE HEARD IN THE PAST E.G. FROM A FAVOURITE T.V. SHOW.]



### Useful Link:

Meaningful Speech are at the forefront of educating others about Gestalt Language Learning. They have a wealth of information, resources and advice - and a brilliant Instagram account too!

