

March 2024

JCT Newsletter

COMMUNICATION IS EVERYONE'S BUSINESS.



WELCOME TO OUR MARCH NEWSLETTER

This month's newsletter focuses on **Targeted Interventions** to support children and Young People with SLCN. The Joint Communication Team and the CLCH Speech and Language Therapy Service work together closely to ensure educators in Hammersmith and Fulham are enabled to receive training to run a wide range of interventions to support learners. We'll share some of them here.

Don't forget to look out for our Summer Term workshops which will be bookable via our website soon: lbhfinpirehub.com.

If you're having a well-earned break soon, we hope you enjoy it!

The JCT Team

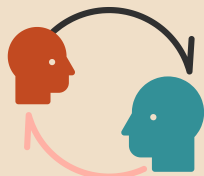
TIP OF THE MONTH:

Explain pastoral vocabulary: In all age ranges, don't presume learners know what behaviour or pastoral related words like: 'accident,' 'consequence' and 'punctuality' mean - take time to explain these words, use visual aids to support and check understanding.

GET IN TOUCH

E-mail: inspirehf@lbhf.gov.uk

Visit our website:
lbhfinpirehub.com



UPCOMING MARCH WORKSHOPS:

19th March
3:30 - 4pm

Running a Targeted Group:
Vocabulary Teaching Strategies for
Upper KS2 and Secondary

20th March
8:30 - 9:15am

Sentence Building Teaching
Strategies Primary

20th March
3:30 - 4:15pm

Enabling Learning Environments
Primary

25th March
8:30 - 9:00am

Running a Targeted Group:
Vocabulary Teaching Strategies for
Upper KS2 and Secondary

25th March
3:30 - 4:15pm

Understanding Spoken Language
Primary



TARGETED INTERVENTION WORKSHOPS

Here is a handy guide to different Targeted Intervention training workshops available, sorted by area of need:

<u>Understanding Spoken Language</u>	<u>Vocabulary</u>	<u>Sentences</u>
<p>Understanding Spoken Language (Universal and Targeted approaches) <i>EY, Primary, Secondary</i> JCT</p> <p>Barrier Games <i>Primary</i> JCT</p> <p>Language for Thinking <i>Primary</i> CLCH</p> <p>Lego Therapy <i>Primary, Secondary</i> CLCH</p> <p>Comprehension Building <i>Primary</i> CLCH</p> <p>Comprehension Monitoring <i>Primary</i> CLCH</p> <p>Box Clever <i>EYFS / KS1</i> CLCH</p>	<p>Vocabulary / Word Aware <i>Primary</i> JCT</p> <p>Running a Targeted Group: Vocabulary (Word Detectives and Word Collectors) <i>Upper KS2 – Secondary</i> JCT</p>	<p>Sentence Building Teaching Strategies (inspired by Colourful Semantics) <i>Primary</i> JCT</p> <p>Targeted Intervention: Grammar – Tenses, Plurals and Pronouns "coming soon" <i>Upper KS2 – Secondary</i> JCT</p> <p>Barrier Games <i>Primary</i> JCT</p> <p>Box Clever <i>EYFS / KS1</i> CLCH</p> <p>Using Shapes to Support Talking <i>Primary / Secondary</i> CLCH</p>
<u>Storytelling and Narrative</u>	<u>Speech and Stammering</u>	<u>Social Interaction</u>
<p>Storytelling and Narrative Teaching Strategies <i>Primary</i> JCT</p> <p>Running a Targeted Group: Storytelling and Narrative <i>Upper KS2 – Y8</i> JCT</p>	<p><i>Talk to us about this area of need</i></p>	<p>Language for Behaviour and Emotions <i>KS2 – Secondary</i> CLCH</p> <p>Attention Building <i>EYFS / Primary</i> CLCH</p> <p>Lego Therapy <i>Primary, Secondary</i> CLCH</p> <p>Stories to Support Social Understanding <i>Primary, Secondary</i> CLCH</p> <p>Problem Solving Through Drawing <i>Primary, Secondary</i> CLCH</p>
<p>Covers multiple areas of SLCN: "In person only"</p> <ul style="list-style-type: none"> - TalkBoost - Reception Booster Intervention 		

How to book:

If the workshop is run by **JCT** book here: lbhfinpirehub.com/events/

If the workshop is run by **CLCH** book here: <https://www.services2schools.org.uk/> [Tip - type the course name in the search box in the top right hand corner]

[Click here to book](#)

Resource of the month:

We publish a Joint Training Offer guide at the start of each term which presents all of the JCT and CLCH workshops in the same place.

Find it under the 'Resources' tab here:

<https://lbhfinpirehub.com/resources/categories/jct-resources/>

Waves of Intervention Model



Not sure which Targeted Interventions would meet your learners needs?

Using the **Speech and Language UK Progression Tool** is a great way to identify if learners would benefit from Targeted Intervention - get in touch for more information!